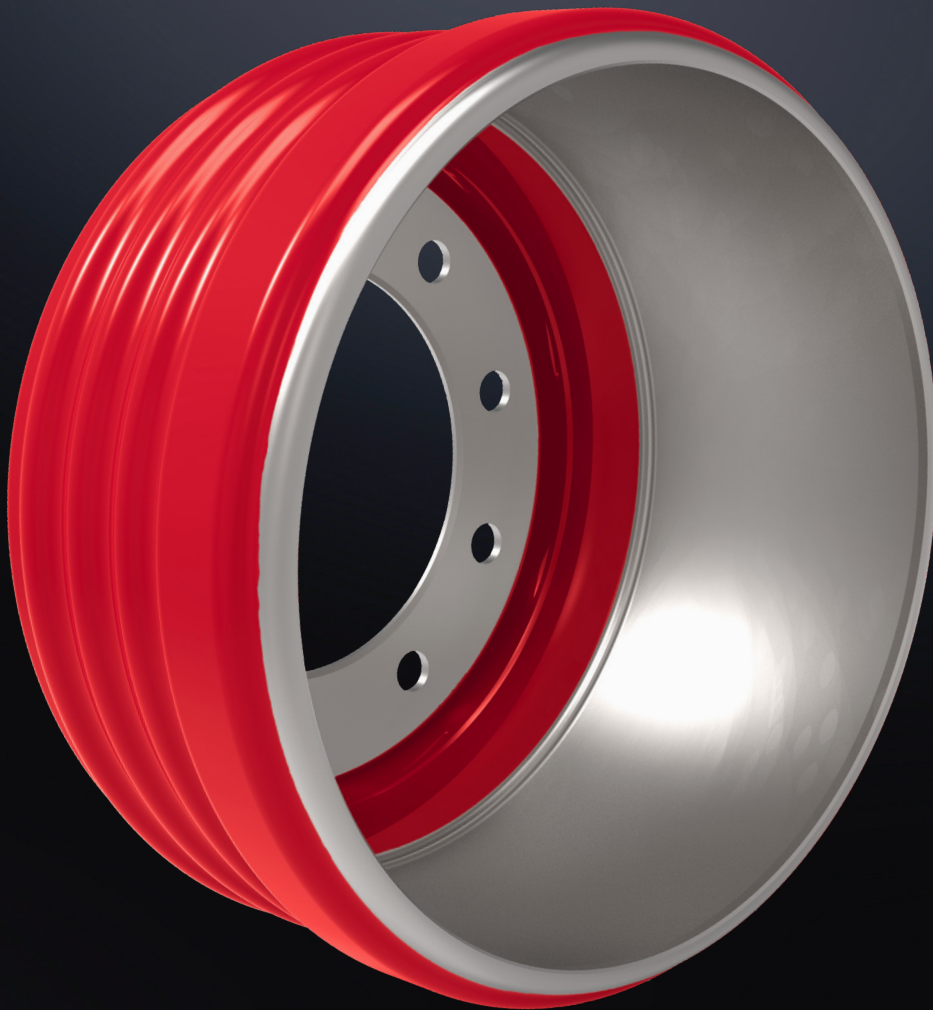


# VALUE AND RELIABILITY

LIGHTWEIGHT MERITOR RED BRAKE DRUMS



**Meritor**

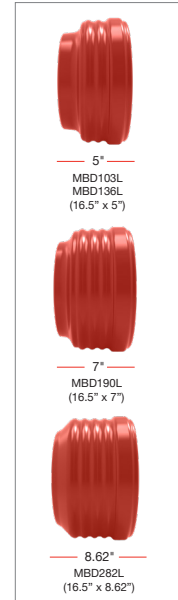
**FOR  
A WORLD  
THAT'S  
ALWAYS ON™**

# VALUE AND RELIABILITY

Introducing the Lightweight Meritor Red Drum family built to suit steer, drive and trailer axles with a brake size of 16.5" x 5", 7", 8.62" (285mm PCD, 10 stud). These new single piece steel shell drums have been optimised through innovative engineering to eliminate balance weights and achieve a 20% weight reduction in comparison to standard cast drums. For additional peace of mind, internal testing at our Cummins-Meritor laboratories has shown these drums meet our own exacting standards as well as the US Department of Transportation FMVSS-121 dynamometer requirements.

## FEATURES AND BENEFITS

Features	Benefits
<ul style="list-style-type: none"> <li>Machine balanced</li> </ul>	<ul style="list-style-type: none"> <li>Delivers superior concentricity and better balance</li> <li>Best in its class appearance with no weld seams or balance weights</li> </ul>
<ul style="list-style-type: none"> <li>Lightweight construction compared to standard cast drums</li> </ul>	<ul style="list-style-type: none"> <li>Increases payload capacity</li> <li>Improves fuel economy</li> <li>Reduces operational costs</li> </ul>
<ul style="list-style-type: none"> <li>Available in popular wheel-end configurations and axle ratings</li> </ul>	<ul style="list-style-type: none"> <li>Fits most vehicle specifications in your fleet</li> </ul>
<ul style="list-style-type: none"> <li>12 month warranty, unlimited km</li> </ul>	<ul style="list-style-type: none"> <li>Certainty for maintenance planning</li> </ul>



## SPECIFICATIONS

Part No.	Brake Size	PCD (Bolt Circle)	Bolt Holes	Bolt Hole Size (in/mm)	Overall Depth (in/mm)	Brake Surface Width (in/mm)	Pilot Diameter	Weight	Interchange	GAWR
MBD103L	16.5" x 5" (Steer Axle)	11.25" (285mm)	10	1.25" (32.5mm)	9.21" (234mm)	5.83" (148mm)	8.78" (223mm)	77lb (35kg)	90600B 1005332 10081067	14,600
MBD136L	16.5" x 5" (KW steer axle)	11.25" (285mm)	10	1.25" (32.5mm)	8.89" (226mm)	5.46" (139mm)	8.78" (223mm)	75lb (34kg)	60001 1005331 10081065	14,600
MBD190L	16.5" x 7" (Drive & Trailer)	11.25" (285mm)	10	1" (25.4mm)	10.38" (264mm)	7.6" (194mm)	8.78" (223mm)	88lb (40kg)	89996B 10030774 56864B	23,000
MBD282L	16.5" x 8.62" (Trailer)	11.25" (285mm)	10	0.93" (23.8mm)	11.21" (284.73mm)	9.1" (231.14mm)	8.78" (223mm)	100lb (45kg)	91812B 10080287	23,000



Meritor Heavy Vehicle Systems Australia  
50 Calarco Drive  
Derrimut, VIC 3026  
AUSTRALIA

(03) 8353 6050

meritorpartsexpress.com

CMFL072 RED BRAKE DRUMS 02/24  
Produced in AUS 02/24  
©2024 Cummins Inc.